



Kleine Rebenschildlaus - *Parthenolecanium corni*



Kleine Rebenschildlaus - *Parthenolecanium corni*



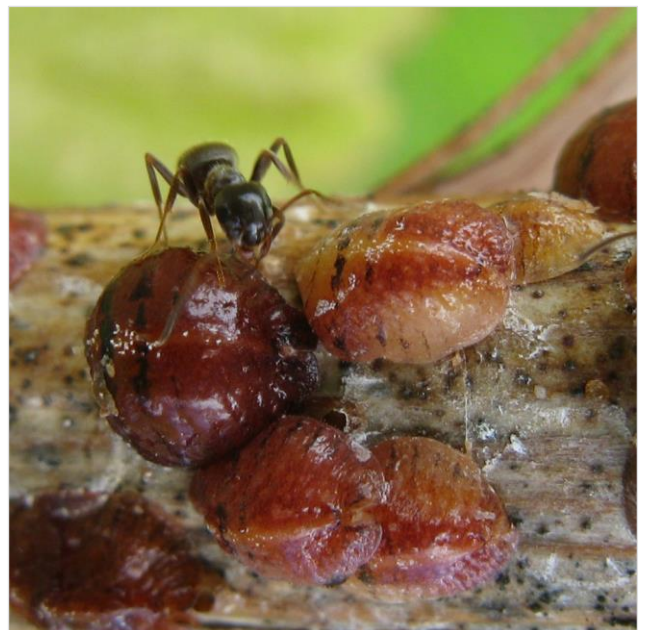
Kleine Rebenschildlaus - *Parthenolecanium corni*



Kleine Rebenschildlaus - *Parthenolecanium corni*



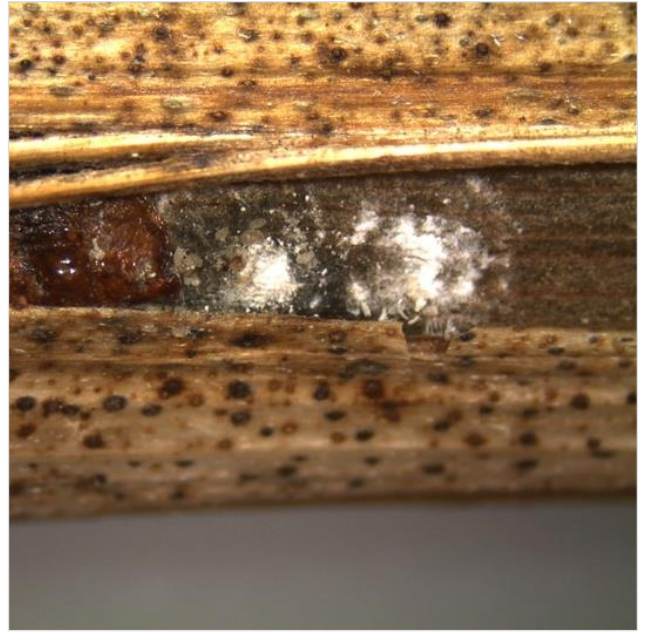
Kleine Rebenschildlaus - *Parthenolecanium corni*



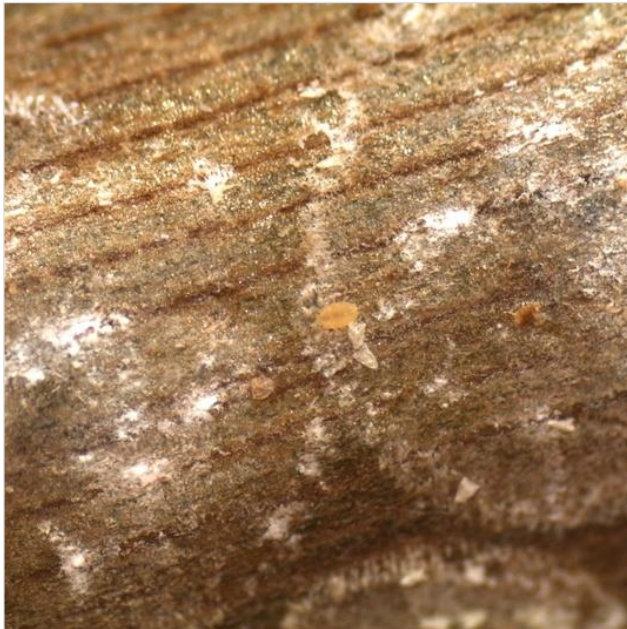
Kleine Rebenschildlaus - *Parthenolecanium corni*



Kleine Rebenschildlaus - *Parthenolecanium corni*



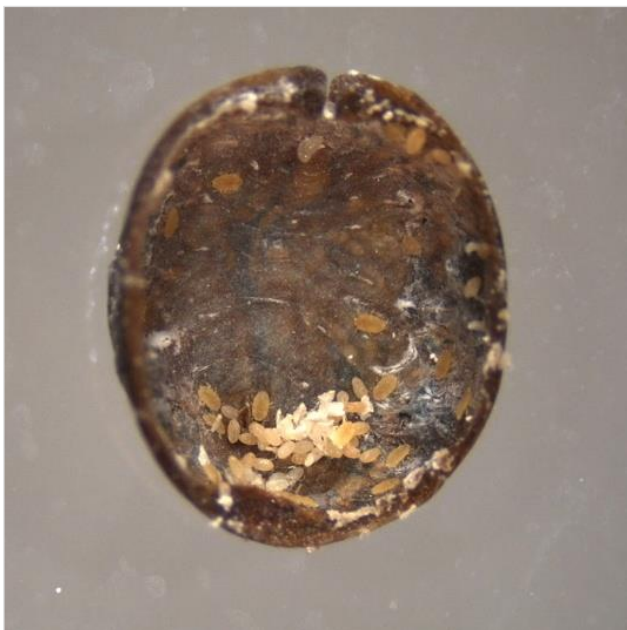
Kleine Rebenschildlaus - *P. corni* - Überwinterungsplatz



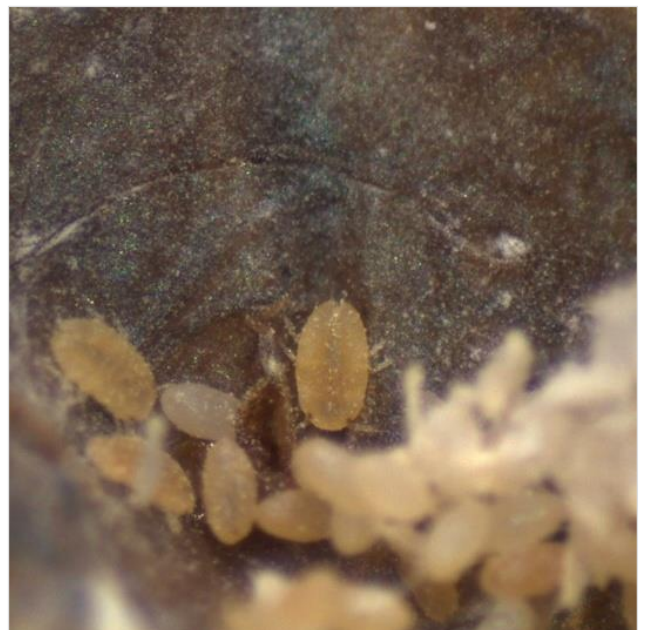
Kleine Rebenschildlaus - *P. corni* - Schildränder (Diagnose)



Kleine Rebenschildlaus - *P. corni* - Schild mit Krabber



Kleine Rebenschildlaus - *P. corni* - Eier und Junglarven



Kleine Rebenschildlaus - *P. corni* - Eier und Junglarven